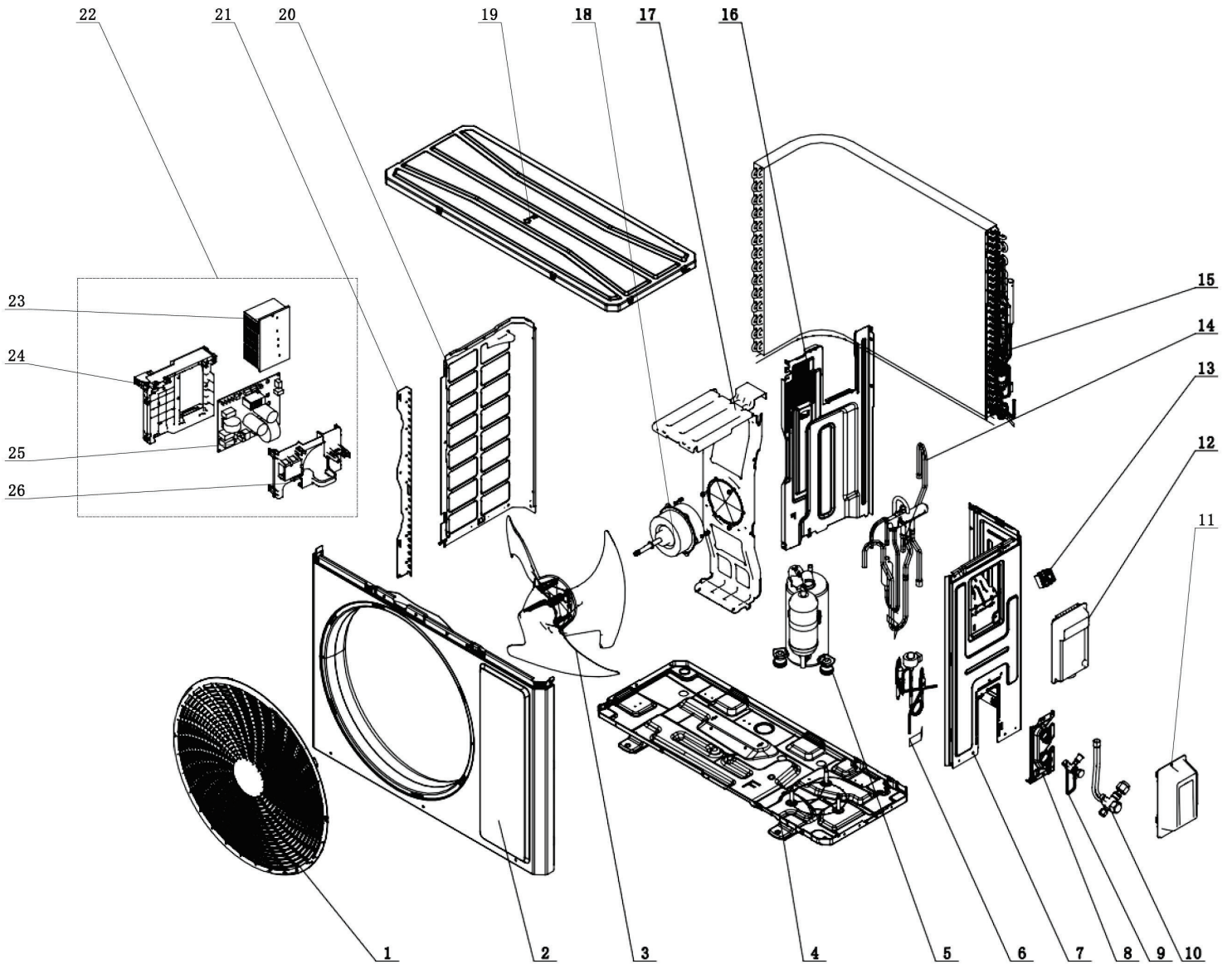


EXPLODED VIEW

ENV18HP230V1R32AO



| No. | Part Description | Qty. | Part Code |
|-----|-------------------------------|------|-----------------|
| 4 | Chassis Sub-Assy | 1 | 01700006076102P |
| NA | Electrical Heater | 1 | 765100049 |
| 5 | Compressor and Fittings | 1 | 009001060783 |
| NA | Compressor Gasket | 3 | 009033060003 |
| 15 | Condenser Assy | 1 | 01100206198302 |
| NA | Current Divider | 2 | 03413032 |
| 6 | Electronic Expansion Valve | 1 | 072009000017 |
| NA | Strainer | 1 | 0721304401 |
| NA | Strainer | 1 | 035021060015 |
| 8 | Valve Support | 1 | 012044060022P |
| 10 | Cut-off valve 1/2(N) | 1 | 070001060024 |
| 9 | Cut-off valve 1/4(N) | 1 | 070001060022 |
| 14 | 4-Way Valve Assy | 1 | 030152061035 |
| NA | 4-Way Valve Assy | 1 | 030152061034 |
| NA | 4-Way Valve | 1 | 430004032 |
| NA | Silencer 1 | 1 | 07243050 |
| NA | Sealing Cap of Joint | 1 | 06640104 |
| NA | Damping Block 140X105X3(1.6) | 1 | 76010070 |
| NA | Electric Expand Valve Fitting | 1 | 07200206002214 |
| NA | Magnet Coil | 1 | 4300040072 |
| 16 | Clapboard Assy | 1 | 000075060128 |
| 17 | Motor Support | 1 | 012048060145 |
| 3 | Axial Flow Fan | 1 | 10335262 |
| 20 | Left Side Plate | 1 | 012055060393P |
| 22 | Electric Box Assy | 1 | 100002081646 |
| 24 | Electric Box | 1 | 20001306008501 |
| 23 | Radiator | 1 | 43003406011601 |
| 25 | Main Board | 1 | 300027063750 |
| NA | Relay | 2 | 44020452 |
| NA | Relay | 1 | 441001060031 |
| 26 | Electric Box Cover | 1 | 20008206006801 |
| 13 | Terminal Board | 1 | 42200006007501 |
| NA | Temperature Sensor | 1 | 39000106006901 |

| No. | Part Description | Qty | Part Code |
|-----|-----------------------|-----|-------------------|
| NA | Right Side Plate Assy | 1 | 000081060389 |
| 7 | Right Side Plate | 1 | 01205606037704P |
| NA | Earthing | 1 | 012002060014 |
| NA | Wire Clamp | 1 | 200015060023 |
| NA | Front Panel Assy | 1 | 00000306054301 |
| 2 | Front Panel | 1 | 01207306161101P02 |
| NA | Rear Grill | 1 | 016001060088 |
| NA | Sponge (Rear Grill) | 2 | 12204221 |
| 19 | Top Cover Assy | 1 | 00009706033302 |
| NA | Coping | 1 | 012049060117P |
| NA | Sponge | 1 | 11000006809701 |
| 12 | Handle | 1 | 01221006000701P |
| NA | Handle | 1 | 01221006000701 |
| 11 | Valve Cover | 1 | 20008706000503 |
| NA | Drainage hole Cap | 4 | 06813401 |
| NA | Drainage hole Cap | 1 | 7671301802 |
| NA | Drainage Joint | 1 | 26113009 |
| | | | |
| | | | |
| | | | |