



FLEXX24C
FLEXX36C

| NO. | Part Description | Qty | Part Code |
|-----|--------------------------|-----|----------------|
| 1 | Thermal Expansion Valve | 1 | 071017060032 |
| 2 | Filter Strainer | 2 | 035021060019 |
| 3 | Left Side Plate | 1 | 017037060241 |
| 4 | Cut off Valve - 3/8 | 1 | 071302391 |
| 5 | Water Tray - Hz | 1 | 2690220000201 |
| 6 | Cut off Valve - 3/4 | 1 | 070001000009 |
| 7 | Choke Plug | 8 | 76718209 |
| 8 | Evaporator Sub-Assy | 1 | 01000106029101 |
| 9 | Water Tray - Vert | 1 | 2690220000101 |
| 10 | Rear Side Plate Sub-Assy | 1 | TBD |

FLEXX48C
FLEXX60C

| NO. | Part Description | Qty | Part Code |
|-----|--------------------------|-----|---------------|
| 1 | Thermal Expansion Valve | 1 | 071017060028 |
| 2 | Filter Strainer | 2 | 035021060019 |
| 3 | Left Side Plate | 1 | 012055060430P |
| 4 | Cut off Valve - 3/8 | 1 | 071302391 |
| 5 | Water Tray - Hz | 1 | 2690220501 |
| 6 | Cut off Valve - 3/4 | 1 | 070001000009 |
| 7 | Choke Plug | 8 | 76718209 |
| 8 | Evaporator Assy | 1 | 011001061884 |
| 9 | Water Tray - Vert | 1 | 2690220601 |
| 10 | Rear Side Plate Sub-Assy | 1 | 017051060129 |



PARTS
MANUAL

GREE ELECTRIC APPLIANCES INC.OF ZHUHAI
GREECOMFORT.COM

GREE ELECTRIC APPLIANCES INC.OF ZHUHAI
GREECOMFORT.COM

A COILS

MODELS:

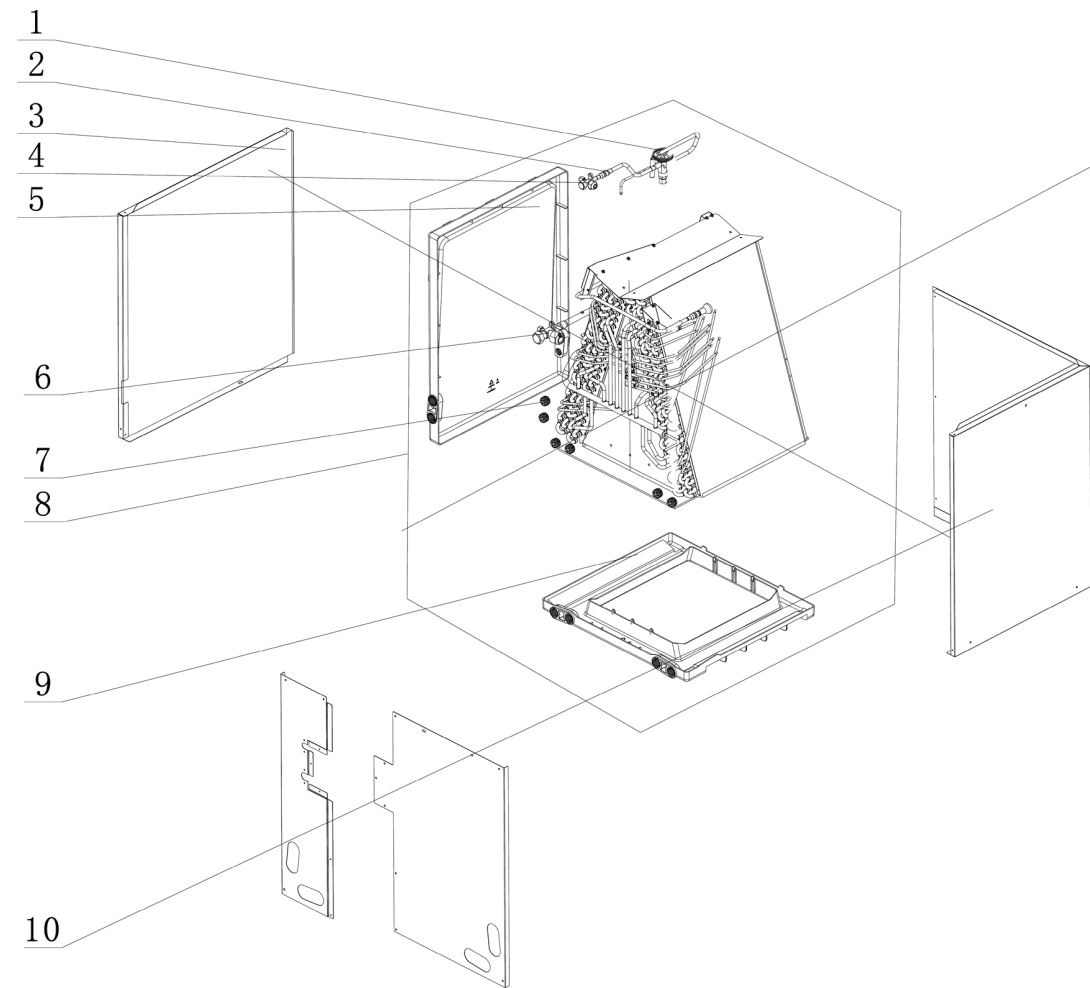
FLEXX24C
FLEXX36C
FLEXX48C
FLEXX60C

Thank you for choosing our product.
Please read this Installation & Owner's Manual carefully before
operation and retain it for future reference.

If you lose this Manual, please contact your local distributor or
visit www.greecomfort.com/resources now to download and
file the electronic version.

**FLEXX24C
FLEXX36C**

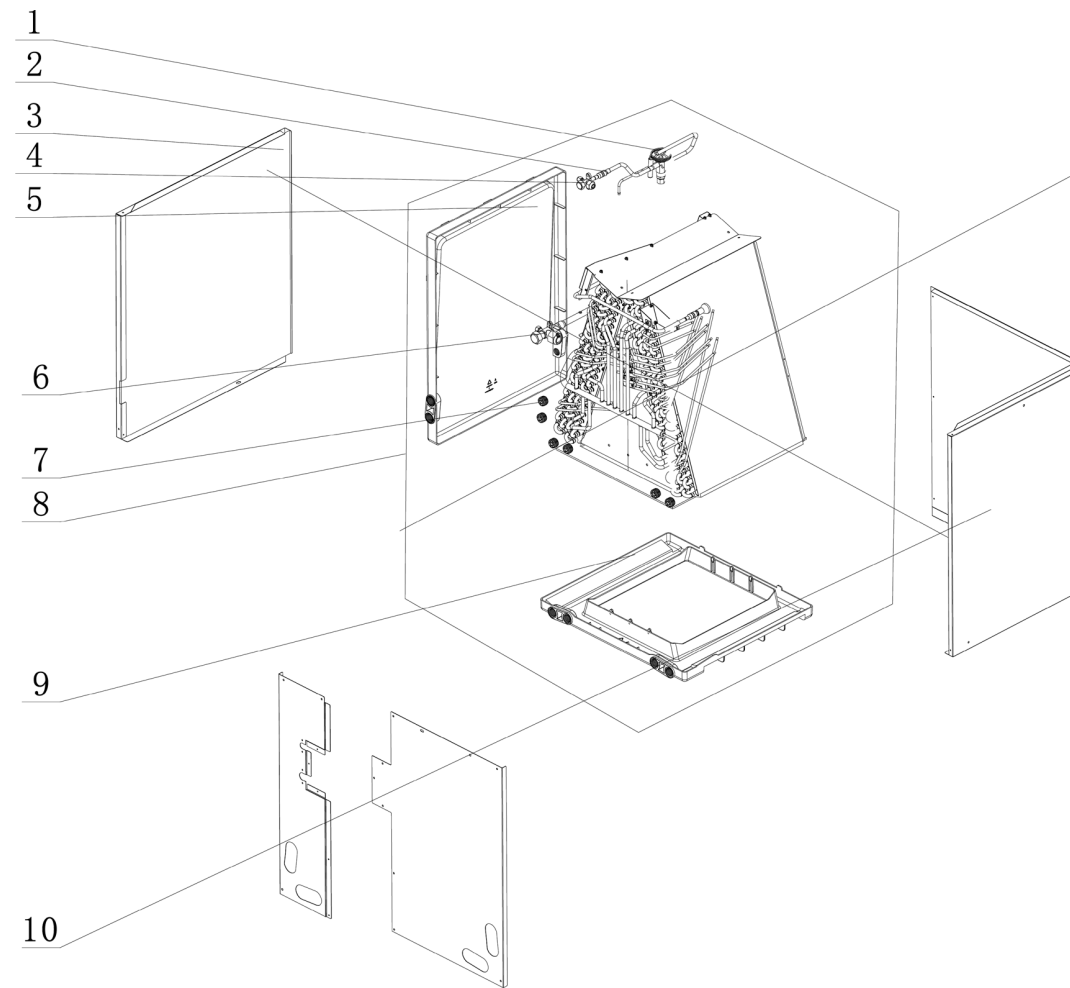
EXPLODED VIEW



GREE ELECTRIC APPLIANCES INC. OF ZHUHAI
GREECOMFORT.COM

**FLEXX48C
FLEXX60C**

EXPLODED VIEW



GREE ELECTRIC APPLIANCES INC. OF ZHUHAI
GREECOMFORT.COM



U.S. CONTACT INFORMATION TRADEWINDS, LLC

E-mail: info@twclimate.com

Contractor Support: 888-850-7928 | Mon-Fri 8 AM - 5 PM EDT

GREE ELECTRIC APPLIANCES INC. OF ZHUHAI