



THE ULTRA SERIES



GREECOMFORT.COM

OPTIMAL PERFORMANCE
IN THE MOST **CHALLENGING** CLIMATES

ULTRA SINGLE-ZONE SYSTEMS

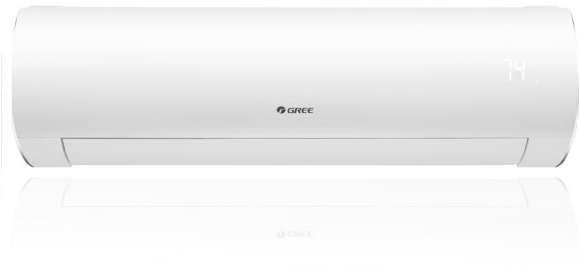


- HIGH EFFICIENCY, UP TO 38 SEER / 15.3 HSPF
- HEATING RANGE: -22°F - 75°F
- COOLING RANGE: 0°F TO 129°F
- SELF-DIAGNOSIS
- SIMPLE OPERATION



- HIGH EFFICIENCY, 23 SEER / 10.5 HSPF
- HEATING RANGE: -31°F - 75°F
- COOLING RANGE: 0°F TO 115°F
- SLEEK LOOK TO BLEND WITH YOUR DECOR
- SUPERIOR CONTROL

MODEL		SAP09HP230V1A	SAP12HP230V1A
System Type		HEAT PUMP	
SYSTEM PERFORMANCE			
Cooling Capacity (Min-Max)	Btu/h	9000 (1535 - 12966)	12000 (2900 - 15354)
Heating Capacity (Min-Max)	Btu/h	9000 (2388 - 13648)	12200 (3071 - 18766)
SEER / EER		38 / 16.67	30.5 / 15.3
HSPF / COP		15 / 4.47	14 / 3.8
Energy Star®		YES	YES
Cooling Temperature Range	°F	0 - 129	0 - 129
Heating Temperature Range	°F	-22 - 75	-22 - 75
INDOOR UNIT			
Air flow (Min-Max)	CFM	206 - 424	235 - 500
Sound Pressure Level (Cooling / Heating)	dB(A)	19 - 46 / 19 - 46	22 - 49 / 22 - 49
Dehumidification	pt/hr	1.69	2.96
Condensate Drain Size (OD)	in	5/8	5/8
Unit Dimension (WxHxD)	in	39 7/8 x 12 1/8 x 8 3/4	39 7/8 x 12 1/8 x 8 3/4
Package Dimension (WxHxD)	in	42 7/16 x 14 13/16 x 11 13/16	42 7/16 x 14 13/16 x 11 13/16
Weight (Net / Gross)	lbs	29.8 / 36.4	29.8 / 36.4
OUTDOOR UNIT			
Compressor Type		GREE G-10 / 2 - STAGE INVERTER	
Sound Pressure Level (Cooling / Heating)	dB(A)	57 / 57	53 / 53
Unit Dimension (WxHxD)	in	35 13/32 x 23 1/2 x 14 7/8	35 13/32 x 23 1/2 x 14 7/8
Package Dimension (WxHxD)	in	37 3/16 x 24 13/16 x 16 7/16	37 3/16 x 24 13/16 x 16 7/16
Weight (Net / Gross)	lbs	99.2 / 105.8	105.8 / 49.4
Refrigerant Charge - R410A	oz	50.4	49.4
Coil Type		Aluminum Fin-Copper Tube / Acrylic Resin Protection	
REFRIGERANT PIPING			
Line Set Size (Liquid - Gas)	in	1/4 - 1/2	1/4 - 1/2
Pre-Charge Length	ft	25	
Pipe Length (Min / Max)	ft	10 / 49	10 / 98
Max. Pipe Elevation	ft	33	49
ELECTRICAL			
Power Supply		208-230V / 1Ph / 60Hz	
Rated Current Cooling	amps	6.2	6.5
Rated Current Heating	amps	6.9	6.9
MCA	amps	9	9
MOCP	amps	15	15
Main Power Wire Size	AWG	Per Local Code	
Interconnecting Wire Size	AWG	14 / 4	
LIMITED WARRANTY		5 Years Parts and Compressor - Residential	



SAP18HP230V1A	SAP24HP230V1A	VIRU30HP230V1A	VIRU36HP230V1A
18000 (4094 - 21837)	22000 (6800 - 30700)	28000 (5500 - 30700)	33000 (8800 - 40900)
18000 (4094 - 24566)	24000 (6800 - 32000)	28700 (4400 - 35200)	34600 (16700 - 49400)
24.5 / 13.54	21.5 / 13	23 / 11.2	23 / 10.25
12 / 3.52	12 / 3.5	10.5 / 3.11	10.5 / 3.17
YES	YES	NO	NO
0 - 129	0 - 129	0 - 115	0 - 115
-22 - 75	-22 - 75	-31 - 75	-31 - 75
SAP18HP230V1AH	SAP24HP230V1AH	VIRU30HP230V1AH	VIRU36HP230V1AH
353 - 736	383 - 824	441 - 824	441 - 824
34 - 51 / 34 - 51	27 - 54 / 37 - 55	36 - 55 / 36 - 55	36 - 55 / 36 - 55
3.8	4.23	6.34	7.40
5/8	5/8	5/8	5/8
44 3/16 x 13 x 9 13/16	44 3/16 x 13 x 9 13/16	53 3/16 x 12 5/8 x 10	53 3/16 x 12 5/8 x 10
46 7/8 x 16 x 13 3/16	46 7/8 x 16 x 13 3/16	57 x 14 x 16 5/8	57 x 14 x 16 5/8
36.4 / 44.1	35.3 / 41.9	42 / 52	42 / 52
SAP18HP230V1AO	SAP24HP230V1AO	VIRU30HP230V1AO	VIRU36HP230V1AO
		GREE G-10 / 2 - STAGE / 3 CYLINDER INVERTER	
59 / 59	59 / 59	61 / 61	63 / 63
38 5/8 x 31 1/8 x 16 13/16	38 5/8 x 31 1/8 x 16 13/16	43 5/8 x 43 1/2 x 17 5/16	43 5/8 x 43 1/2 x 17 5/16
42 1/2 x 33 1/8 x 19 1/8	42 1/2 x 33 1/8 x 19 1/8	45 x 44 x 19	45 x 44 x 19
141.1 / 152.1	147.7 / 158.8	229 / 240	254 / 265
70.6	81.1	123.5	123.5
		Aluminum Fin-Copper Tube / Acrylic Resin Protection	
1/4 - 5/8	1/4 - 5/8	1/4 - 5/8	1/4 - 5/8
		25	
10 / 131	10 / 164	10 / 165	10 / 165
66	98	100	100
		208-230V / 1Ph / 60Hz	
10.8	16.4	17	19
10.8	16.4	25	30
22	22	30	32
30	35	50	50
		Per Local Code	
		14 / 4	

MULTI⁺ULTRA

MULTIU 18 - 42 SERIES

- High efficiency up to 23 SEER
- Sound levels down to 58 dB(A)
- Up to 5 Indoor Units
- Cooling Range: 0°F - 115°F
- Heating Range: -31°F - 75°F

SUPER⁺ MULTI⁺ULTRA

MULTIU 48 SERIES

- High efficiency up to 18 SEER
- Sound levels down to 56 dB(A)
- Up to 7 indoor units
- Cooling Range: 54°F - 129°F
- Heating Range: -31°F - 91°F



BRANCH (BU) BOXES FOR MULTI48		RFX12A (FXA2A-D)	RFX13A (FXA3A-D)
System Type		HEAT PUMP - MINI-BRANCH (BU) BOXES FOR MULTI48	
Maximum No. Per System		3	2
No. Connectable Indoor Units		Up to 2	Up to 3
Inlet Port Size to OD Unit (Liquid-Gas)	in	3/8 - 5/8	1/4 - 3/8
Outlet Port Size to ID Unit (Liquid-Gas)	in	1/4 - 3/8	1/4 - 3/8
Sound Pressure Level (Min - Max)	dB(A)	28	28
Unit Dimensions (LxWxH)	in	14 3/16 x 12 5/16 x 7 3/16	14 3/16 x 12 5/16 x 7 3/16
Weight (Net / Gross)	lbs	12.1 / 16.5	13.2 / 17.6
Line Set Size (Liquid-Gas)	in	1/4 - 3/8	1/4 - 3/8
Dedicated Power Supply (V / Hz / PH)		208-230 / 1 / 60	208-230 / 1 / 60
Limited Warranty (Residential Only)		5 Years on Parts	

ULTRA MULTI-ZONE SYSTEMS



MODEL		MULTIU18HP230V1DO	MULTIU24HP230V1DO	MULTIU36HP230V1DO	MULTIU42HP230V1DO	MULTIU48HP230V1BO	
System Type		HEAT PUMP					
Number of Zones		2	2 - 3	2 - 4	2 - 5	2 - 7	
SYSTEM PERFORMANCE (Non-Ducted Indoor Units)							
Cooling Capacity (Min-Max)	Btu/h	18000 (6998 - 21001)	22000 (7500 - 30000)	36000 (8871 - 40000)	42000 (8871 - 42991)	48000 (3412 - 54592)	
Heating Capacity (Min-Max)	Btu/h	21000 (7000 - 26000)	26000 (7500 - 31000)	36000 (8871 - 42514)	42000 (8871 - 46062)	54000 (4094 - 59369)	
SEER / EER		23 / 12.5	23 / 12.5	23 / 9	23 / 9	18 / 8.85	
HSPF / COP		10.5 / 3.6	10.5 / 3.6	10 / 3.2	10 / 3.4	10 / 3.2	
Energy Star®		YES	YES	NO	NO	NO	
SYSTEM PERFORMANCE (Ducted Indoor Units)							
Cooling Capacity (Min-Max)	Btu/h	18000 (6998 - 21001)	22000 (7500 - 30000)	36000 (8871 - 40000)	42000 (8871 - 42991)	48000 (3412 - 54592)	
Heating Capacity (Min-Max)	Btu/h	21000 (7000 - 26000)	26000 (7500 - 31000)	36000 (8871 - 42514)	42000 (8871 - 46062)	54000 (4094 - 59369)	
SEER / EER		14 / 8.5	14 / 8.5	14 / 7.5	14 / 7.5	16 / 8.55	
HSPF / COP		9 / 3.6	9 / 3.6	9 / 3.2	9 / 3.4	10 / 3.2	
Energy Star®		NO					
OUTDOOR UNIT							
Cooling Temperature Range	°F	0 - 115	0 - 115	0 - 115	0 - 115	50 - 129	
Heating Temperature Range	°F	-31 - 75	-31 - 75	-31 - 75	-31 - 75	-31 - 81	
Compressor Type		GREE 2 - Stage / 3 - Cylinder Inverter					
Sound Pressure Level (Cooling / Heating)	dB(A)	58 / 58	60 / 60	62 / 62	62 / 62	56 / 56	
Unit Dimension (WxHxD)	in	37 5/8 x 15 5/8 x 27 5/8	38 5/8 x 16 13/16 x 31 1/8	42 13/16 x 17 5/16 x 43 7/16	42 13/16 x 17 5/16 x 43 7/16	35 7/16 x 13 7/16 x 53	
Package Dimension (WxHxD)	in	40 7/16 x 17 7/8 x 28 7/8	42 1/2 x 19 1/8 x 33 1/8	45 1/2 x 18 7/8 x 45 1/2	45 1/2 x 18 7/8 x 45 1/2	38 9/16 x 54 5/16 x 17 5/16	
Weight (Net / Gross)	lbs	78 / 183	174 / 185	280 / 298	282 / 291	307 / 331	
Refrigerant Charge - R410A	oz	77.6	95.2	158.7	176.3	229.3	
Coil Type		Aluminum Fin-Copper Tube / Acrylic Resin Protection					
REFRIGERANT PIPING							
Port Size (Liquid - Gas)	Port A (in)	1/4 - 3/8	1/4 - 3/8	1/4 - 3/8	1/4 - 3/8	MULTIU48 Systems require the installation of (2) or (3) Port Branch Boxes to connect desired number of indoor units. See Branch Box information below.	
	Port B (in)	1/4 - 3/8	1/4 - 3/8	1/4 - 3/8	1/4 - 3/8		
	Port C (in)		1/4 - 3/8	1/4 - 3/8	1/4 - 3/8		
	Port D (in)			1/4 - 3/8	1/4 - 3/8		
	Port E (in)				1/4 - 3/8		
Pre-Charge Length	ft	66	98	131	131		
Pipe Length (Min / Max)	ft	10 / 164	10 / 230	10 / 246	10 / 246	10 / 443	
Pipe Length to furthest Indoor Unit	ft	82					230
Max. Pipe Elevation	ft	26	49	49	49	98	
ELECTRICAL							
Power Supply		208-230V / 1Ph / 60Hz				208-230V / 1Ph / 60Hz	
Rated Current Cooling	amps	22	26	32	32	35	
Rated Current Heating	amps	22	26	32	32	35	
MCA	amps	20	23	36	38	39	
MOCP	amps	35	40	60	60	60	
Main Power Wire Size	AWG	Per Local Code				Per Local Code	
Interconnecting Wire Size	AWG	14 / 4				18 / 2	
LIMITED WARRANTY		5 Years Parts and Compressor - Residential					

INDOOR UNIT OPTIONS FOR ALL MULTI-ZONE SYSTEMS

WALL MOUNTS



The Sapphire, the smart ductless wall mount unit. Slim compact design hangs inconspicuously on the wall and mixes with most interior designs. Built-in WiFi technology allows direct local control from smartphones with the GREE+ smart app.



- WiFi included
- Smartphone interface
- Quiet down to 19 dB(A)
- Multiple fan speeds
- Precise airflow control
- Swing louver control
- I-Feel function



The Vireo+ ductless wall mount has a compact design that blends well with any decor, the perfect option for your home or office needs.



- Multiple fan speeds
- Swing louver control
- Precise airflow control
- WiFi optional
- Automatic voltage adaption
- I-Feel function
- Remote & wired controller options



The Livo GEN3 ductless wall mount has a compact design, for quiet comfort and attractive appearance. You can count on consistent comfort from the Livo GEN3.



- Multiple fan speeds
- Swing louver control
- LED display settings
- Sleep function
- Timer function
- Privacy lock mode
- Remote & wired controller options

SAPPHIRE WALL MOUNT

MODEL		SAP09HP230V1AH	SAP12HP230V1AH	SAP18HP230V1AH	SAP24HP230V1AH
System Type		HEAT PUMP			
Cooling Capacity - Nominal	Btu/h	9000	12000	18000	22000
Heating Capacity - Nominal	Btu/h	9000	12200	18000	24000
Energy Star®		Check Outdoor Unit Match-ups for Energy Star Qualification			
Air flow (Min-Max)	CFM	206 - 424	235 - 500	353 - 736	383 - 824
Sound Pressure Level (Cooling / Heating)	dB(A)	19 - 46 / 19 - 46	22 - 49 / 22 - 49	34 - 51 / 34 - 51	27 - 54 / 37 - 55
Dehumidification	pt/hr	1.69	2.96	3.8	4.23
Condensate Drain Size	in	5/8	5/8	5/8	5/8
Unit Dimension (WxHxD)	in	39 7/8 x 12 1/8 x 8 3/4	39 7/8 x 12 1/8 x 8 3/4	44 3/16 x 13 x 9 13/16	44 3/16 x 13 x 9 13/16
Package Dimension (WxHxD)	in	42 7/16 x 11 13/16 x 14 13/16	42 7/16 x 11 13/16 x 14 13/16	46 7/8 x 13 3/16 x 16	46 7/8 x 13 3/16 x 16
Weight (Net / Gross)	lbs	29.8 / 36.4	29.8 / 36.4	36.4 / 44.1	35.3 / 41.9
Line Set Size (Liquid - Gas)	in	1/4 - 1/2	1/4 - 1/2	1/4 - 5/8	1/4 - 5/8
Power Supply		208-230V / 1Ph / 60Hz (Powered by the Outdoor Unit)			
LIMITED WARRANTY		5 Years Parts - Residential			

VIREO+ WALL MOUNT

MODEL		VIR09HP230V1BH	VIR12HP230V1BH	VIR18HP230V1BH	VIR24HP230V1BH
System Type		HEAT PUMP			
Cooling Capacity - Nominal	Btu/h	9000	12000	18000	22000
Heating Capacity - Nominal	Btu/h	11000	13000	19800	23000
Energy Star®		Check Outdoor Unit Match-ups for Energy Star Qualification			
Air flow (Min-Max)	CFM	171 - 377	171 - 400	335 - 559	530 - 706
Sound Pressure Level (Cooling / Heating)	dB(A)	29 - 43 / 29 - 43	26 - 43 / 28 - 43	33 - 47 / 36 - 47	36 - 48 / 37 - 48
Dehumidification	pt/hr	1.69	2.96	3.8	4.23
Condensate Drain Size	in	5/8	5/8	5/8	5/8
Unit Dimension (WxHxD)	in	33 5/16 x 11 7/16 x 8 5/16	33 5/16 x 11 7/16 x 8 5/16	38 3/16 x 11 13/16 x 8 7/8	42 7/16 x 12 13/16 x 9 3/4
Package Dimension (WxHxD)	in	36 1/8 x 14 5/16 x 11	36 1/8 x 14 5/16 x 11	41 x 12 x 15	45 1/4 x 13 1/8 x 16 1/8
Weight (Net / Gross)	lbs	22.1 / 26.5	22.1 / 26.5	27.6 / 34.2	34.2 / 41.9
Line Set Size (Liquid - Gas)	in	1/4 - 3/8	1/4 - 1/2	1/4 - 5/8	1/4 - 5/8
Power Supply		208-230V / 1Ph / 60Hz (Powered by the Outdoor Unit)			
LIMITED WARRANTY		5 Years Parts - Residential			

LIVO GEN3 WALL MOUNT

MODEL		LIVV09HP230V1AH	LIVV12HP230V1AH	LIVV18HP230V1AH	LIVV24HP230V1AH
System Type		HEAT PUMP			
Cooling Capacity (Min-Max)	Btu/h	9100 (2457 - 9600)	12000 (1024 - 12624)	17400 (4094 - 20000)	22000 (5900 - 25200)
Heating Capacity (Min-Max)	Btu/h	9500 (2457 - 11500)	13000 (2388 - 13648)	18000 (4100 - 21000)	24000 (4500 - 25900)
Energy Star®		Check Outdoor Unit Match-ups for Energy Star Qualification			
Air flow (Min-Max)	CFM	182 - 294	182 - 371	335 - 471	412 - 677
Sound Pressure Level (Cooling / Heating)	dB(A)	26 - 39 / 29 - 41	28 - 42 / 30 - 43	35 - 47 / 35 - 46	37 - 49 / 36 - 47
Dehumidification	pt/hr	1.69	2.96	3.8	4.23
Condensate Drain Size	in	5/8	5/8	5/8	5/8
Unit Dimension (WxHxD)	in	31 1/8 x 10 3/4 x 7 7/8	33 1/4 x 11 1/4 x 8 3/8	38 1/8 x 11 3/4 x 8 3/4	42 1/4 x 12 3/4 x 9 5/8
Package Dimension (WxHxD)	in	33 1/2 x 10 5/16 x 13 5/16	36 1/8 x 14 5/16 x 10 7/8	40 7/8 x 12 x 15	44 1/4 x 13 x 15 3/4
Weight (Net / Gross)	lbs	19.8 / 24.3	22 / 26.5	29.8 / 36.4	37.5 / 45.2
Line Set Size (Liquid - Gas)	in	1/4 - 3/8	1/4 - 3/8	1/4 - 1/2	1/4 - 5/8
Power Supply		208-230V / 1Ph / 60Hz (Powered by the Outdoor Unit)			
LIMITED WARRANTY		5 Years Parts - Residential			

INDOOR UNIT OPTIONS FOR ALL MULTI-ZONE SYSTEMS

CEILING CASSETTE & FLOOR/CEILING

CEILING CASSETTE

GREE's ceiling cassette will inconspicuously provide quiet performance through innovative design. The ceiling cassette is suitable for any room and can be easily installed in a suspended ceiling with only a discreet decorative discharge grille visible.



- 4-Way discharge air
- Multiple fan speeds
- Swing louver control
- Automatic voltage adaption
- Internal condensate drain pump
- Sentry float switch
- Decorative discharge air grille (sold separately)
- Fresh air intake (24K model only)
- Remote & wired controller options

UNIVERSAL FLOOR/CEILING

Our universal floor/ceiling indoor units are designed to be suspended from a ceiling or mounted low on a wall. The slender and lightweight design is perfect for restaurants or hallways where wall space is limited.



- 4-Way discharge air
- Multiple fan speeds
- Sleep function
- Swing louver control
- Washable, polymeric air filters
- Privacy lock mode
- Automatic voltage adaption
- Remote & wired controller options

MINI FLOOR CONSOLE

Gree's Mini Console indoor units are aesthetically pleasing and the perfect size for any room. It can be mounted as low as six inches above the floor and has front panel access to the filter for ease of cleaning.



- 4-Way discharge air
- Multiple fan speeds
- Comfortable sleep mode
- Swing louver
- Cleanable air filter
- Dry coil mode for anti-mildew protection
- IR remote control included

CEILING CASSETTE

MODEL		CAS12HP230V1AC	CAS18HP230V1AC	CAS24HP230V1AC
System Type		HEAT PUMP		
Cooling Capacity - Nominal	Btu/h	12000	14400	22800
Heating Capacity - Nominal	Btu/h	13000	16000	27400
Energy Star®		Check Outdoor Unit Match-ups for Energy Star Qualification		
Air flow (Min-Max)	CFM	265 - 363	265 - 363	500 - 694
Sound Pressure Level	dB(A)	42 - 46	42 - 46	35 - 39
Dehumidification	pt/hr	1.40	1.80	2.5
Condensate Drain Size	in	1 1/4	1 1/4	1 1/4
Unit Dimension (WxHxD)	in	22 1/2 x 22 1/2 x 9	22 1/2 x 22 1/2 x 9	33 x 33 x 9 1/2
Package Dimension (WxHxD)	in	33 3/8 x 28 3/4 x 12 1/4	33 3/8 x 28 3/4 x 12 1/4	37 7/8 x 37 7/8 x 12 1/4
Weight (Net / Gross)	lbs	39.7 / 50.7	39.7 / 50.7	61.7 / 77.2
Line Set Size (Liquid - Gas)	in	1/4 - 3/8	1/4 - 1/2	1/4 - 5/8
Power Supply		208-230V / 1Ph / 60Hz (Powered by the Outdoor Unit)		
LIMITED WARRANTY		5 Years Parts - Residential		
CASSETTE GRILLE (Required)		CASGRILLE1SM	CASGRILLE1SM	CASGRILLE1LG
Grille Dimension (WxHxD)	in	25 5/8 x 25 5/8 x 2	25 5/8 x 25 5/8 x 2	37 7/16 x 37 7/16 x 2 3/8
Package Dimension (WxHxD)	in	28 3/4 x 26 3/8 x 4	28 3/4 x 26 3/8 x 4	41 x 40 3/8 x 4 1/2
Weight (Net / Gross)	lbs	5.5 / 8	5.5 / 8	14.3 / 22

UNIVERSAL FLOOR/CEILING

MODEL		FLR09HP230V1AF	FLR12HP230V1AF	FLR18HP230V1AF	FLR24HP230V1AF
System Type		HEAT PUMP			
Cooling Capacity - Nominal	Btu/h	8500	11900	17000	22800
Heating Capacity - Nominal	Btu/h	9500	13100	18700	27400
Energy Star®		Check Outdoor Unit Match-ups for Energy Star Qualification			
Air flow (Min-Max)	CFM	265 - 383	265 - 383	294 - 559	412 - 736
Sound Pressure Level	dB(A)	36 - 40	36 - 40	40 - 45	44 - 48
Dehumidification	pt/hr	1.69	2.96	3.8	5.28
Condensate Drain Size	in	1 1/16	1 1/16	1 1/16	1 1/16
Unit Dimension (WxHxD)	in	48 x 27 1/2 x 8 7/8	48 x 27 1/2 x 8 7/8	48 x 27 1/2 x 8 7/8	48 x 27 1/2 x 8 7/8
Package Dimension (WxHxD)	in	52 3/4 x 32 1/4 x 11 7/8	52 3/4 x 32 1/4 x 11 7/8	52 3/4 x 32 1/4 x 11 7/8	52 3/4 x 32 1/4 x 11 7/8
Weight (Net / Gross)	lbs	88.2 / 110.2	88.2 / 110.2	88.2 / 110.2	99.2 / 119
Line Set Size (Liquid - Gas)	in	1/4 - 3/8	1/4 - 3/8	1/4 - 1/2	3/8 - 5/8
Power Supply		208-230V / 1Ph / 60Hz (Powered by the Outdoor Unit)			
LIMITED WARRANTY		5 Years Parts - Residential			

MINI FLOOR CONSOLE

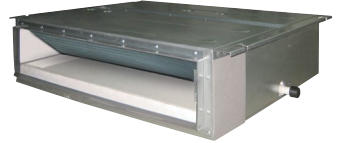
MODEL		CONS09HP230V1AF	CONS12HP230V1AF	CONS18HP230V1AF
System Type		HEAT PUMP		
Cooling Capacity - Nominal	Btu/h	9000	12000	18000
Heating Capacity - Nominal	Btu/h	9500	13000	19800
Energy Star®		Check Outdoor Unit Match-ups for Energy Star Qualification		
Air flow (Min-Max)	CFM	188 - 383	206 - 441	241 - 494
Sound Pressure Level	dB(A)	25 - 40	27 - 43	33 - 48
Dehumidification	pt/hr	1.69	2.96	3.8
Condensate Drain Size	in	1 1/8	1 1/8	1 1/8
Unit Dimension (WxHxD)	in	27 9/16 x 8 1/2 x 23 5/8	27 9/16 x 8 1/2 x 23 5/8	27 9/16 x 8 1/2 x 23 5/8
Package Dimension (WxHxD)	in	31 x 11 1/8 x 27 3/8	31 x 11 1/8 x 27 3/8	31 x 11 1/8 x 27 3/8
Weight (Net / Gross)	lbs	33 / 39.7	33 / 39.7	33 / 39.7
Line Set Size (Liquid - Gas)	in	1/4 - 3/8	1/4 - 3/8	1/4 - 1/2
Power Supply		208-230V / 1Ph / 60Hz (Powered by the Outdoor Unit)		
LIMITED WARRANTY		5 Years Parts - Residential		

INDOOR UNIT OPTIONS FOR ALL MULTI-ZONE SYSTEMS

SLIM DUCT

SLIM DUCT (LOW STATIC)

With a sleek, compact design, the GREE concealed duct indoor units offer the ultimate in flexibility and discretion. These slim duct units are designed to be concealed above a suspended ceiling or in closet space; delivers air via ducting or suitable ceiling wall grilles.



MODEL		DUCT09HP230V1AD	DUCT12HP230V1AD	DUCT18HP230V1AD	DUCT24HP230V1AD
System Type		HEAT PUMP			
Cooling Capacity - Nominal	Btu/h	8500	11900	15300	23800
Heating Capacity - Nominal	Btu/h	9500	13100	18700	27400
Energy Star®		NO			
Air flow (Min-Max)	CFM	147 - 265	177 - 324	294 - 412	324 - 586
External Static Pressure	In W.c.	0.04	0.04	0.04	0.06
Sound Pressure Level	dB(A)	31 - 37	32 - 39	33 - 41	34 - 42
Dehumidification	pt/hr	1.69	2.96	3.8	5.28
Condensate Drain Size	in	1	1	1	1
Unit Dimension (WxHxD)	in	27 9/16 x 24 1/4 x 7 7/8	27 9/16 x 24 1/4 x 7 7/8	35 7/16 x 24 1/4 x 7 7/8	43 5/16 x 24 1/4 x 7 7/8
Package Dimension (WxHxD)	in	35 x 29 1/8 x 11 7/16	35 x 29 1/8 x 11 7/16	44 1/8 x 29 1/8 x 11 7/16	52 x 29 1/8 x 11 7/16
Weight (Net / Gross)	lbs	48.5 / 59.5	50.7 / 64	59.5 / 79.4	68.3 / 90.4
Line Set Size (Liquid - Gas)	in	1/4 - 3/8	1/4 - 3/8	1/4 - 1/2	1/4 - 5/8
Power Supply		208-230V / 1Ph / 60Hz (Powered by the Outdoor Unit)			
LIMITED WARRANTY		5 Years Parts - Residential			

- Low static pressure capability
- Slim line construction
- Alternate return air from bottom or rear
- Internal condensate pump
- Sentry float switch
- Remote & wired controller options

SLIM DUCT (HIGH STATIC)

Compact and powerful, the high static slim duct offers the ultimate in flexibility and discretion. Concealed above a suspended ceiling or within open closet spaces to deliver conditioned air via extended ducting and suitable ceiling or wall grilles.



MODEL		DUCT09HP230V1BD	DUCT12HP230V1BD	DUCT18HP230V1BD	DUCT24HP230V1BD
System Type		HEAT PUMP			
Cooling Capacity - Nominal	Btu/h	9000	12000	18000	24000
Heating Capacity - Nominal	Btu/h	9500	13000	19000	27000
Energy Star®		No			
Air flow (Min-Max)	CFM	188 - 354	212 / 353	288 / 589	406 / 736
External Static Pressure	In W.c.	0.6	0.6	0.8	0.8
Sound Pressure Level	dB(A)	25 - 36	26 - 38	26 - 39	28 - 42
Dehumidification	pt/hr	1.69	2.96	3.8	5.28
Condensate Drain Size	in	1 1/8	1 1/8	1 1/8	1 1/8
Unit Dimension (WxHxD)	in	32 3/4 x 29 3/4 x 11 7/8	32 3/4 x 29 3/4 x 11 7/8	44 1/2 x 29 3/4 x 11 7/8	44 1/2 x 29 3/4 x 11 7/8
Package Dimension (WxHxD)	in	35 1/4 x 31 3/4 x 13 5/8	35 1/4 x 31 3/4 x 13 5/8	47 5/16 x 32 x 13 5/8	47 5/16 x 32 x 13 5/8
Weight (Net / Gross)	lbs	70.5 / 83.8	70.5 / 83.8	92.6 / 107	92.6 / 107
Line Set Size (Liquid - Gas)	in	1/4 - 3/8	1/4 - 1/2	3/8 - 5/8	3/8 - 5/8
Power Supply		208-230V / 1Ph / 60Hz (Powered by the Outdoor Unit)			
LIMITED WARRANTY		5 Years Parts - Residential			

- High static pressure capability
- Slim line construction
- Outside air capability
- Advanced filter options
- Internal condensate pump
- Sentry float switch
- Remote & wired controller options
- I-Feel function

MATCHING COMBINATION & CAPACITY CHART

MODEL NUMBER	ONE UNIT	TWO UNITS	THREE UNITS	FOUR UNITS	FIVE UNITS
MULTIU18HP230V1DO ¹	9	9+9 9+12 12+12			
MULTIU24HP230V1DO ¹		ABOVE SIZES PLUS: 9+18 12+18 18+18	9+9+9 9+9+12 9+9+18 9+12+12 12+12+12		
MULTIU36HP230V1DO ¹		ABOVE SIZES PLUS: 9+24 12+24 18+24 24+24	ABOVE SIZES PLUS: 9+9+24 9+12+24 9+18+18 9+18+24 12+12+24 12+18+18 12+18+24 18+18+18	ABOVE SIZES PLUS: 9+9+9+24 9+9+12+18 9+9+12+24 9+9+18+18 9+12+12+12 12+12+18	
MULTIU42HP230V1DO ¹			ABOVE SIZES PLUS: 9+24+24 12+24+24 18+18+24	ABOVE SIZES PLUS: 9+9+18+24 9+12+12+24 9+12+18+18 9+12+18+24 9+18+18+18 12+12+12+24 12+12+18+18	ABOVE SIZES PLUS: 9+9+9+9+24 9+9+9+12+18 9+9+9+12+24 9+9+9+18+18 9+12+12+12 9+12+12+18 9+12+12+12+12 12+12+12+12+12

MODEL NUMBER	TWO UNITS	THREE UNITS	FOUR UNITS	FIVE UNITS	SIX UNITS	SEVEN UNITS
MULTIU48HP230V1BO Note: These systems are not compatible with any LIVO Series Product * Cannot be installed on the MULTI48	9+18	9+9+9	9+9+9+9	9+9+9+9+9	9+9+9+9+9+9	9+9+9+9+9+9+9
	9+24	9+9+12	9+9+9+12	9+9+9+9+12	9+9+9+9+9+12	9+9+9+9+9+9+12*
	12+12	9+9+18	9+9+9+18	9+9+9+9+18	9+9+9+9+9+18	9+9+9+9+9+9+18*
	12+18	9+9+24	9+9+9+24	9+9+9+9+24	9+9+9+9+9+24	9+9+9+9+9+12+12*
	12+24	9+12+12	9+9+12+12	9+9+9+12+12	9+9+9+9+12+12	9+9+9+9+12+12+12*
	18+18	9+12+18	9+9+12+18	9+9+9+12+18	9+9+9+9+12+18	
	18+24	9+12+24	9+9+12+24	9+9+9+12+24	9+9+9+9+12+24	
	24+24	9+18+18	9+9+18+18	9+9+9+18+18	9+9+9+9+18+18	
		9+18+24	9+9+18+24	9+9+9+18+24	9+9+9+12+12+12	
		9+24+24	9+12+12+12	9+9+12+12+12	9+9+9+12+12+18*	
		12+12+12	9+12+12+18	9+9+12+12+18	9+9+12+12+12+12*	
		12+12+18	9+12+12+24	9+9+12+12+24	9+9+12+12+18+18*	
		12+12+24	9+12+18+18	9+9+12+18+18		
		12+18+18	9+12+18+24	9+9+12+18+24		
		12+18+24	9+12+24+24	9+12+12+12+12		
		12+24+24	9+18+18+18	9+12+12+12+18		
		18+18+18	9+18+18+24	9+12+12+12+24*		
		18+18+24	12+12+12+12	9+12+12+18+18*		
		18+24+24*	12+12+12+18	12+12+12+12+12*		
		24+24+24*	12+12+12+24	12+12+12+12+18*		
		12+12+18+18	12+12+12+12+24*			
		12+12+18+24*	12+12+12+18+18*			
		12+12+24+24*				
		12+18+18+18*				
		12+18+18+24*				

1 MULTIU series cannot be installed with just 1 Indoor Unit.

USE PHONE CAMERA



FOR QUICK TIP VIDEOS

VISIT GREECOMFORT.COM/RESOURCES
FOR SUBMITTALS, MANUALS, AND MORE...



G R E E C O M F O R T . C O M